



# INSTALLATION MANUAL

## Triton motors

This manual is suitable for the following engine types:

- BRE45-10
- BRE45-20
- BRE45-40

Read the manual before starting installation. Failure to follow the instructions may lead to defects which cannot be claimed under warranty.

Visit our website [www.brel-home.com](http://www.brel-home.com) for more information



Scan the QR code to view the manual and instructional videos

## Table of Content

Warnings	2
Wiring	3
Installing and charging the motor	3
Controlling with the BREL HOME app	3
Technical data Triton motors	4
Handheld transmitter functions	4
First installation of the motor	5
Additional functions	7
Changing settings	9

## Warning

### Conformity Statement

**This product complies with the essential requirements of the following European directives:**

**Radio Equipment Directive (RED) 2014/53/EU:** Meets radio communication requirements such as safety, health, and efficient use of the radio spectrum.

**Electromagnetic Compatibility Directive (EMC) 2014/30/EU:** Meets standards for electromagnetic emissions and immunity to prevent interference.

**Restriction of Hazardous Substances Directive (RoHS) 2011/65/EU:** The product complies with the directives on the use of hazardous substances.

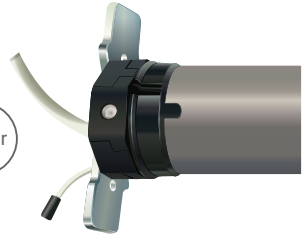
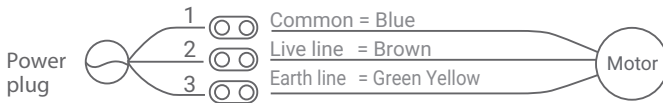
**Machinery Directive (MD) 2006/42/EC:** Meets the safety requirements for the design and manufacture of machinery, including mechanical and electrical safety.

**Note: This document is a summary. Please refer to the full declaration of conformity for detailed information.**



## Wiring

3 DRADEN : 220V/50Hz



## Installing the Motor

**These assemblies are usually already done in the factory**

Attach the crown and wheel to the motor and place the clip on the shaft of the motor so that the wheel is fixed to the motor. Install the motor with the motorbracket on the product and take care that it is secured. Place the motor in the tube of the roller/shutter.

## Besturen met de BREL HOME app

The Triton Wifi motor is easy to control with the BREL HOME app. The motor connects to the BREL HOME app via wifi and then the motor can be set up via the app. The steps are as follows:

Step 1: Go to settings -> Wifi network -> choose the connection to your home network -> disable the 'automatic connection' to your home network.

Step 2: Download the BREL HOME app and create an account (SIGN UP)

Step 3: Click on add product and choose the wifi engine

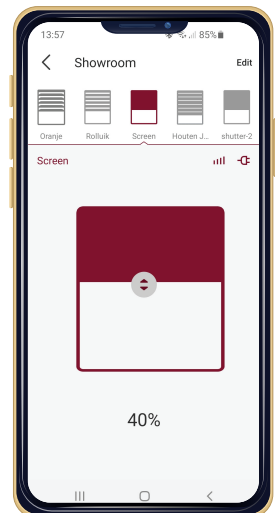
Step 4: Go through all the steps as indicated in the app.

Step 5: Close the app completely -> restart the app -> click Add Room and create the room where the product is located.

Step 6: Go to the wifi engine and link the newly created room to the wifi engine.

Follow the instructions on the following pages if you want to install the motor per transmitter.

**In this app, you can create time functions and scenarios. The BREL HOME app can be connected to Siri, Google Home and Alexa.**



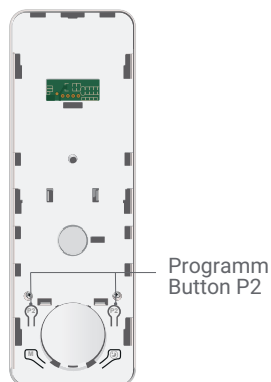
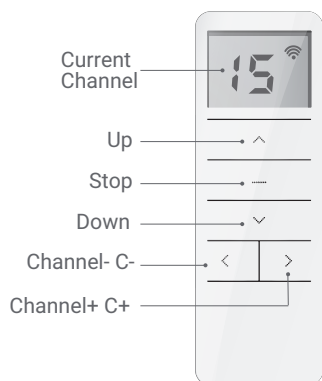
## Technical data of the motor

	BRE45-10	BRE45-20	BRE45-40
Input	5 core	3 core	3 core
Working voltage	230V	230V	230V
Power	113W	161W	228W
Amperage	0.48A	0.69A	0.99A
Force (Nm)	10	20	40
Speed (rpm)	15	15	15
Motor length (mm)	615	615	660
Motor diameter (mm)	45	45	45
Motor head diameter (mm)	60	60	60
Antenna (mm)	170	170	170
Cable (mm)	5000	5000	5000
IP value	IP44	IP44	IP44

The following specifications apply to all Triton motors:




Frequency	433 MHz
Range	25m indoor to 100m outdoor
Capacity	10 channels or transmitters
Operating temperature	-10°C to +55°C
Thermal protection	Yes

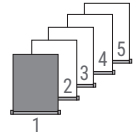
## Functions Remote Control



**There are two P2 keys it doesn't matter which one you use**





## Programming the first remote control/channel

-  The remote control can transmit 15 channels and therefore control multiple blinds. First, select a channel for operating the relevant roller blind. Make sure that you select a free channel (we recommend only 1 product per channel).
-  This remote has also channel 0. All blinds programmed in channel 1~15 are automatically programmed in this channel 0 and can be operated all at once.
-  In case you have selected the wrong channel, go to **Resetting factory settings**.




### ► Select the desired channel.

#### Step 1 Establishing connection

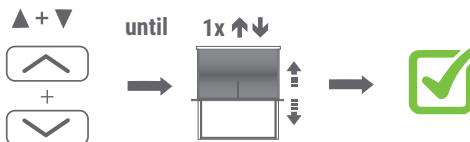
-  In the procedures described here is a maximum interval of 10 seconds to complete each subsequent action: if you wait any longer, the system will leave the edit mode.
-  Normally a button only needs to be pressed shortly. If you need to press and hold a button for several seconds this will be state clearly.
-  The system will confirm each completed step with moving the blind up and down ( ).
-  If a procedure does not play out as described, wait for 20 seconds and start again from the beginning of that step/procedure.



-  If NO end positions are set, the product will move in the pulse / step operation. Go then to STEP 3.
  - If end positions are set, the product will continue to its end position. Go then to STEP 5.
- WARNING: It is possible that the correct end positions have not been set. Go then to OPTION A.


#### Step 2 Adjusting the direction of rotation (Only if the direction of rotation is not correct)

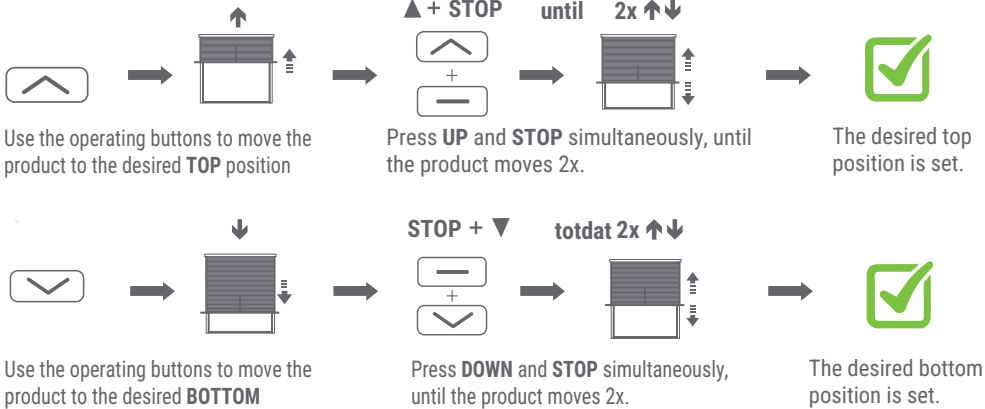
Only possible if no end positions are set.



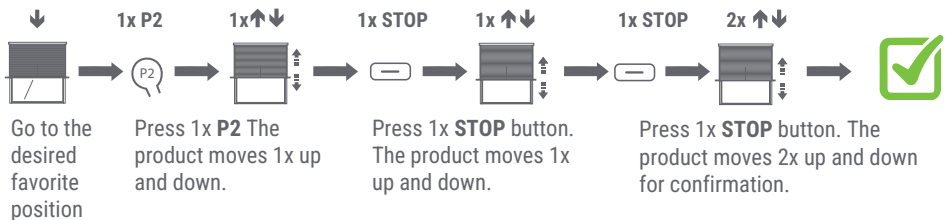
Press **UP** and **DOWN** button simultaneously, until the product moves.

The direction of rotation of the motor is **OK**.

-  If no response check whether the handheld transmitter is locked.

**Step 3** Manually setting the End Limits

If no response check whether the handheld transmitter is locked.

**Step 4** Setting the favorite position (If desired)

Press and hold **STOP** for 3 seconds to move to the favorite position.

Remove it repeat the steps.

## Change settings

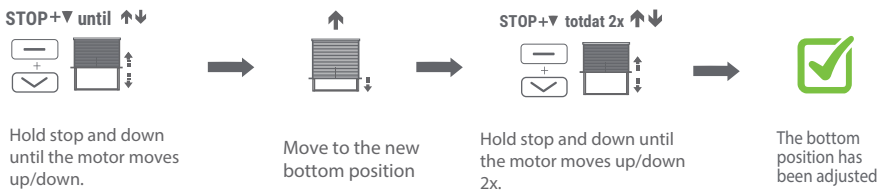
### Adjusting the upper position

 If adjustment is not possible check the lock function or reset the motor



### Adjusting the bottom position

 If adjustment is not possible check the lock function or reset the motor



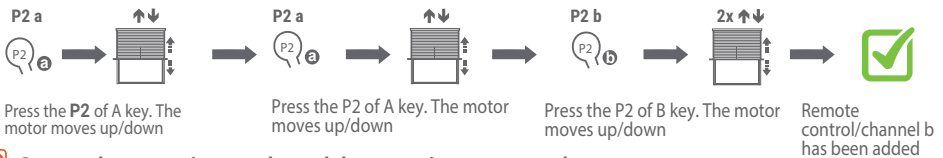
### Registering an additional remote control/channel

Only possible if end positions are set

**a** = Existing remote control/channel

**b** = New remote control/channel

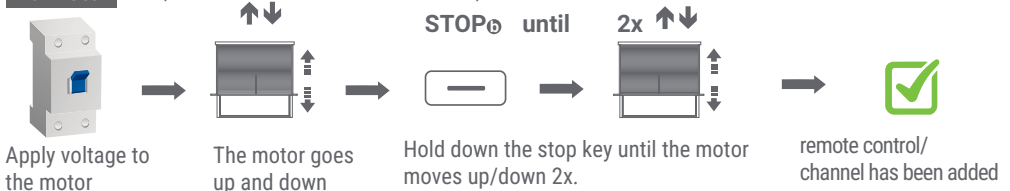
#### Via the existing transmitter



 Start at the transmitter or channel the motor is programmed to

 To delete a transmitter/channel repeat the procedure

#### Via motor (If the old transmitter is lost or broken)



 Start at the transmitter or channel the motor is programmed to

 To delete a transmitter/channel repeat the procedure

## Additional settings BRE

### Obstacle detection Default is on



### Withdrawal function Default is off

When the awning is fully extended, the fabric may just not be completely taut. This function ensures that your fabric is even tighter when the awning is out.



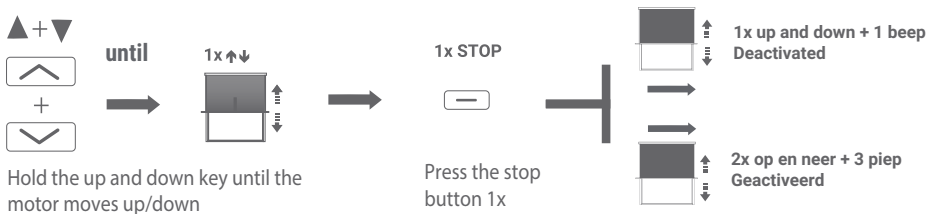
Mode 1: After setting the limits, no sensitive stall detection function within 20 cm below the upper limit, sensitive detection function within 20 cm above the lower limit; no sensitive stall detection function within 10 cm above the lower limit.

Mode 2: No sensitive stall detection function within the limit range.

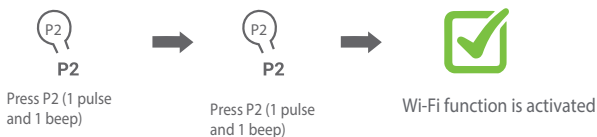
### Sensitive obstacle detection Hard or soft



### Puls mode

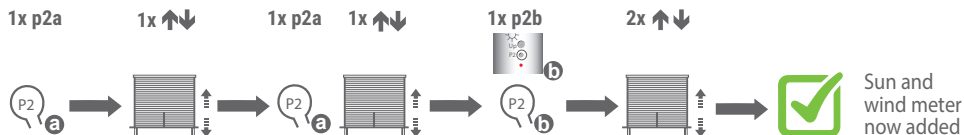


### Activate Wi-Fi function



## Extra functions

### Sun and wind meter



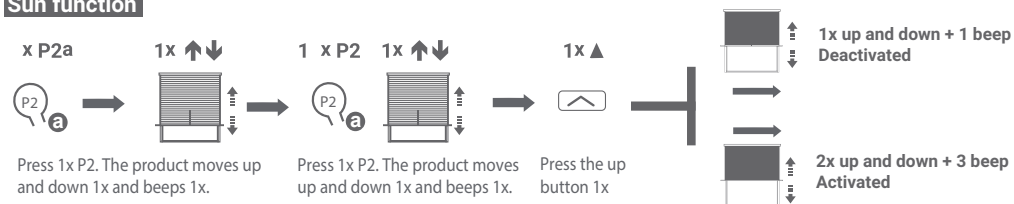
Press P2 or a. The product moves up and down 1x and beeps 1x.

Press P2 or a. The product moves up and down 1x and beeps 1x.

Press P2 or b. The product moves up and down 2x and beeps 3x.

Repeating the top step will remove the sun and wind meter.

### Sun function

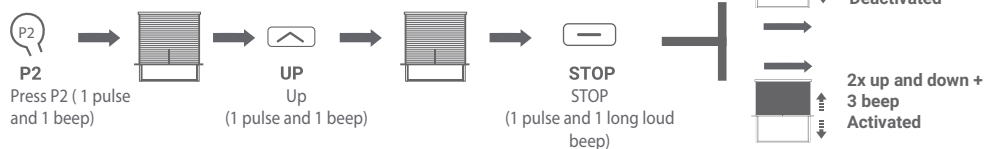


By repeating the above, you can switch the sun function on/off

TIP: Use the THW2415 handheld transmitter with sun function.

### Disappeared sun and wind

Default is on



\* The factory default mode is ON; After the wind detection function is switched off, it can operate normally for 30 minutes without receiving the response signal. If a wind sensor is connected to the motor, this function is activated. If the motor does not receive a signal from the wind sensor every 30 minutes, the awning will go up; if the wind sensor is faulty, the awning will automatically go in after 30 minutes.

**Caution!** When replacing, first remove the sun and wind meter from the motor's memory. If the sun and wind meter is faulty, the theft function must be switched off.

\* The motor goes into pulse mode when the motor has no contact with the sun and wind meter or if the sun and wind meter is faulty. Turn off pulse mode by following the steps on page 8.