



# INSTALLATION MANUAL

## Matter motor

This manual is suitable for the following motor types:

- BEMQ35-06
- BEMQ35-10

Read the manual before starting installation. Failure to follow the instructions may lead to defects which cannot be claimed under warranty.

Visit our website for more information



Scan the QR code here for the manual to download & view instructional videos

**Table of Content**

Warnings	3
Wiring	3
Installation of the motor	3
Controlling with BREL Matter	4
Technical data Matter motors	4
Functions remote control	5
First installation of the motor	5
Changing settings	7
Activating Matter	9
Functions of the P1 button	9

## Warnings

### Conformity Statement

This product complies with the essential requirements of the following European directives:

**Radio Equipment Directive (RED) 2014/53/EU:** Meets radio communication requirements such as safety, health, and efficient use of the radio spectrum.

**Electromagnetic Compatibility Directive (EMC) 2014/30/EU:** Meets standards for electromagnetic emissions and immunity to prevent interference.

**Restriction of Hazardous Substances Directive (RoHS) 2011/65/EU:** The product complies with the directives on the use of hazardous substances.

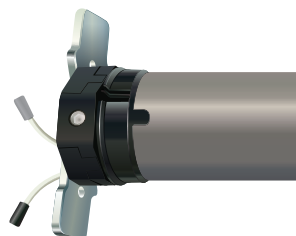
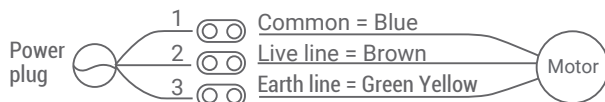
**Machinery Directive (MD) 2006/42/EC:** Meets safety requirements for the design and manufacture of machinery, including mechanical and electrical safety.

**Note: This document is a summary. Please refer to the full declaration of conformity for detailed information.**



## Wiring

3 WIRES: 220V/50Hz



## Installation of the motor

**This installation is usually already done at the factory.**

Fit the adapter and carriage to the motor and secure the carriage with the clip. Install the motor with the motor brackets and be sure this is secure. Mount the motor in the tube of the blinds

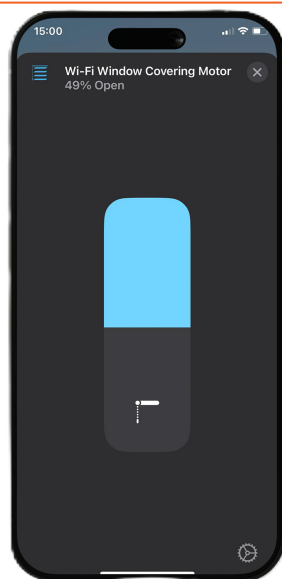
## Controlling with BREL Matter

The Matter motors can easily communicate with all Matter-enabled Smart Home products in your home due to the Matter protocol.

Pair your Matter by BREL product with other Matter products:



Scan the QR code and read more about Matter by BREL



## Technical data of the motor

	<b>BEMQ35-06</b>	<b>BEMQ35-10</b>
Input	3 wires	3 wires
Working voltage	230V	230V
Power	144W	144W
Amperage	0.63A	0.63A
Force (Nm)	6	10
Speed (rpm)	28	17
Motor length (mm)	580	580
Motor diameter (mm)	35	35
Motor head diameter (mm)	40	40
Antenna (mm)	170	170
Cable (mm)	5000	5000
Thermal protection	Yes	Yes

The following specifications apply to all Matter motors:

Frequency	433 MHz
Range	25m indoor to 100m outdoor
	10 channels or transmitters
	IP44
	-10°C to +55°C






ture

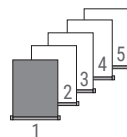
## Functions remote control



There are 2x P2 buttons, no matter which one you press.





### Setting up the first remote/channel

-  The remote control can transmit 15 channels and therefore control multiple blinds. First, select a channel for operating the relevant roller blind. Make sure that you select a free channel (we recommend only 1 product per channel).
-  This remote has also channel 0. All blinds programmed in channel 1~15 are automatically programmed in this channel 0 and can be operated all at once.
-  In case you have selected the wrong channel, go to **Resetting factory settings**.




#### ► Select the desired channel

### Step 1 Establishing connection

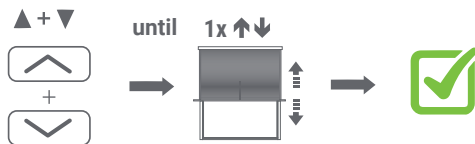
-  If you do not start programming within 10 seconds, the motor will exit programming mode.
-  During programming you need to press the key briefly. If you need to hold it down for a long time this is indicated
-  The motor confirms each completed step with an up and down movement (↕)
-  If a procedure does not go as planned, wait 20 seconds and then start again.



-  If NO end positions are set, the product will move in the pulse / step operation. Go then to STEP 3.
- If end positions are set, the product will continue to its end position. Go then to STEP 5.
- WARNING:** It is possible that the correct end positions have not been set. Go then to OPTION A.

## Step 2 Adjusting the direction of rotation *(Only if the direction of rotation is not correct)*

Only possible if no end positions are set.



Press **UP** and **DOWN** button simultaneously, until the product moves.

The direction of rotation of the motor is **OK**.

Indien geen reactie controleer of de handzender geblokkeerd is.

## Step 3 Setting the End Limits

To move the motor one step: briefly press the **UP** or **DOWN** button

To move the motor continuously: press the **UP** or **DOWN** button for 3 seconds (ATTENTION! Press **STOP** in time)

1. Set the desired top position



Use the operating buttons to move the product to the desired **TOP** position

Press **UP** and **STOP** simultaneously, until the product moves 2x.

The desired top position is set.

2. Set the desired bottom position



Use the operating buttons to move the product to the desired **BOTTOM** position.

Press **DOWN** and **STOP** simultaneously, until the product moves 2x.

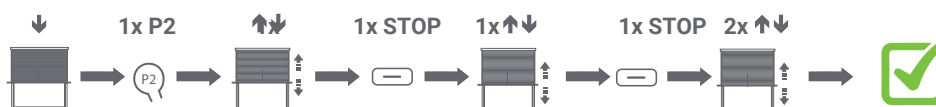
The desired bottom position is set.

Indien geen reactie controleer of de handzender geblokkeerd is.

**The roller blind is now ready for use.**

If you are not satisfied with the result of setting the end positions, go to Option A - adjusting positions or **Resetting factory settings**.

## Step 4 Setting the favorite position (If desired)



Go to the desired favorite position

Press 1x **P2** The product moves 1x up and down.

Press 1x **STOP** button. The product moves 1x up and down.

Press 1x **STOP** button. The product moves 2x up and down for confirmation.

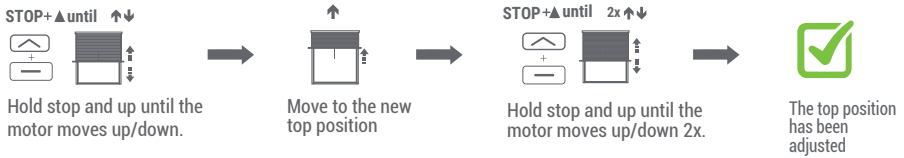
Press and hold **STOP** for 3 seconds to move to the favorite position.

Since the procedure is identical, to remove it repeat the steps.

## Changing settings

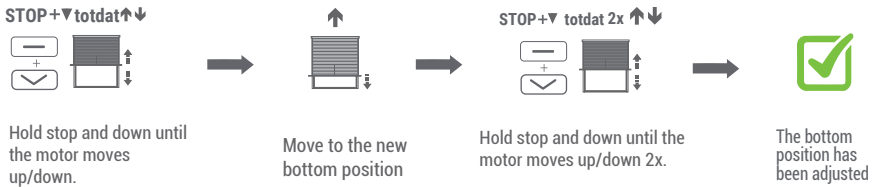
### Adjusting the upper limit

**i** If adjustment is not possible check the lock function or reset the motor

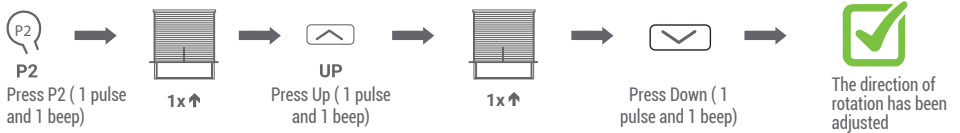


### Adjusting the bottom limit

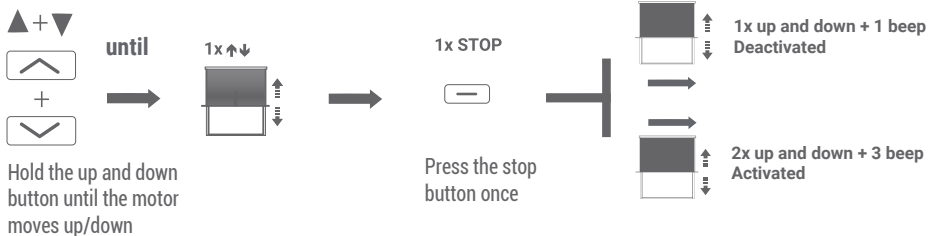
**i** If adjustment is not possible check the lock function or reset the motor



### Changing the direction of rotation



### Pulsmode



## Changing settings

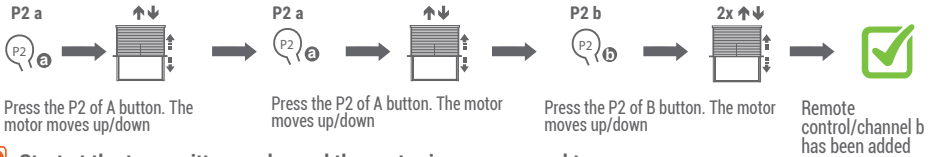
### Registering an additional remote control/channel

Only possible if end positions are set

**a** = Existing remote control/channel

**b** = New remote control/channel

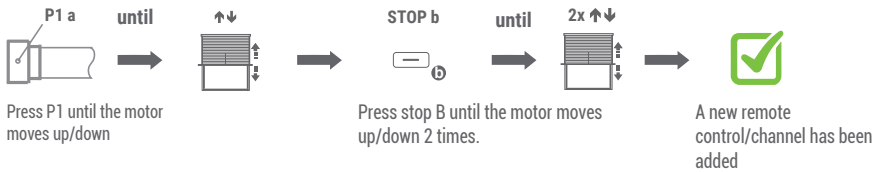
#### Via the existing transmitter



**i** Start at the transmitter or channel the motor is programmed to

**i** To delete a transmitter/channel repeat the procedure

#### Via P1 button (If the old transmitter is lost or broken)

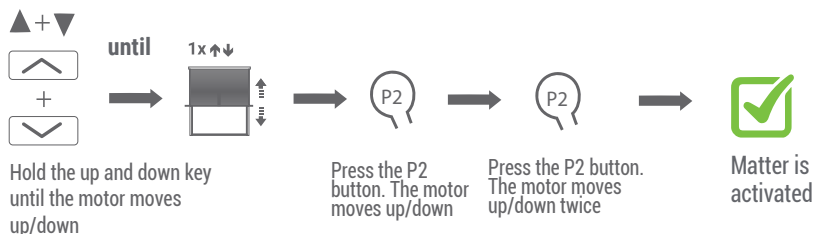


**i** Start at the transmitter or channel the motor is programmed to

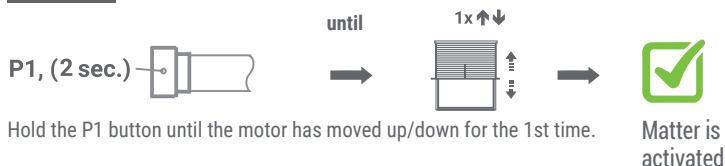
**i** To delete a transmitter/channel repeat the procedure

## Activating Matter

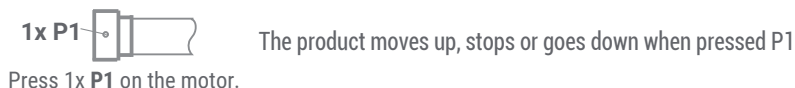
### Method 1



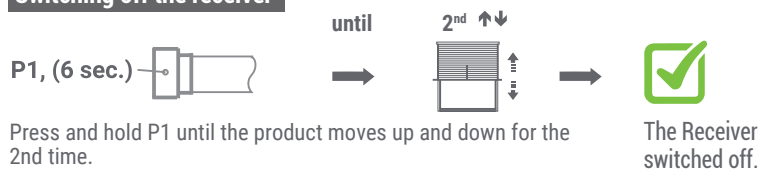
### Method 2



## Additional settings P1 button Can be used without a transmitter as an operating button.

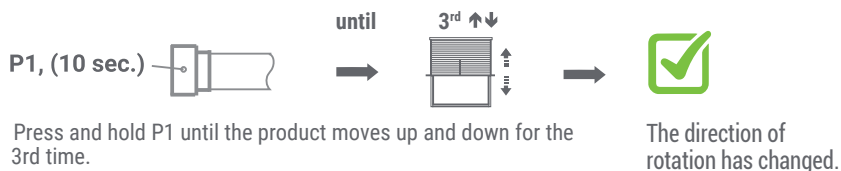


### Switching off the receiver

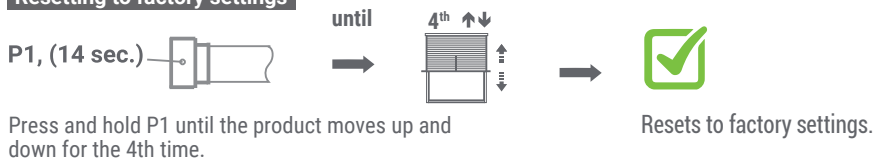


To reactivate the receiver, briefly press P1 once.

### Changing the direction of rotation



### Resetting to factory settings



 To apply new settings: go to step 1